

WPL 610

User Manual



Gebrüder Boley GmbH & Co. KG
Julius-Hölder-Str. 32 - D-70597 Stuttgart
Tel. +49-(0)711-13271-0 - Fax. +49-(0)711-13271-90
info@boley.de - www.boley.de

Lever for descent,
lift and air release

Closing screw

Manometer
max. 10 bar

Movement holder

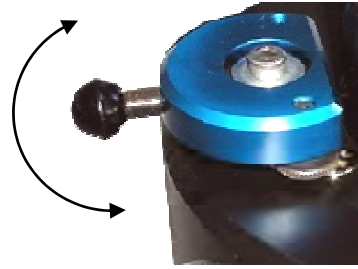
Hand valve



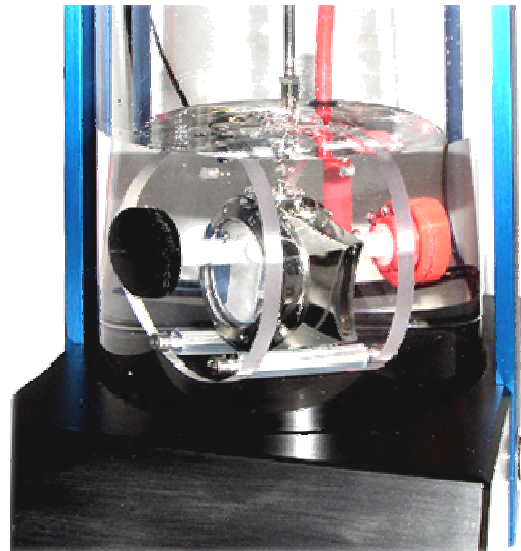
Left = release air

Middle = watch stays on top

Right = dipping



1. Turn the lever to the right:
The watch dives into the water.
The pressure in the cylinder.
decreases and the leak becomes
visible (Air-bubbles).



2. Turn lever to the middle:
The watch comes out of the water.

3. Turn lever to the left:
The pressure releases
from the cylinder.



Security regulations

No responsibility will be taken,
if the Instrument is not used within the security regulations.

*The WPL-610 is manufactured with tested
and high quality materials
and gives you a safe and satisfying result,
if you use it within the security regulations.*

These points are important and must be followed:

1. *Do not expose the instrument to direct sunlight.*
2. *Maximum allowed air pressure is 10 bar (10 atu)*
3. *The WPL-610 may not be connected to an air pressure container with a pressure higher than 10 bar.*
4. *The WPL-610 may be cleaned with water or soapy water only.*

